

**MINISTRY OF CITIZEN PROTECTION  
HELLENIC COAST GUARD  
MARINE ENVIRONMENT PROTECTION DIRECTORATE  
UNIT A'**



**ANALYSIS OF POLLUTION INCIDENTS  
AND ASSESSMENT OF DECISIONS OF IMPOSED SANCTIONS  
YEAR 2011**

**JANUARY 2012**

## **APPENDICES**

### **PART A'**

**-TABLES AND CHARTS FROM THE ANALYSIS OF POLLUTION SOURCES FOR THE YEAR 2011**

**-ANALYSIS OF POLLUTION SOURCES FOR THE YEAR 2011**

**-ANALYSIS OF THE TYPE OF CONTAMINANTS IN POLLUTION INCIDENTS FOR THE YEAR 2011**

### **PART B'**

**-TABLES AND CHARTS FROM THE ANALYSIS OF THE DECISIONS OF IMPOSAL OF ADMINISTRATIVE SANCTIONS**

**-NUMBER OF IMPOSED FINE DECISIONS PER PORT AUTHORITY TO SHIPS, LAND FACILITIES AND OTHER SOURCES**

**- AMOUNT OF IMPOSED FINE SBASED TO THE POLLUTION SOURCE**

**-ANALYSIS OF DECISIONS OF ADMINISTRATIVE SANCTIONS BASED TO THE POLLUTION SOURCE**

**-ANALYSIS OF DECISIONS OF ADMINISTRATIVE SANCTIONS**

**-TOTAL AMOUNT OF IMPOSED FINES FOR MARINE ENVIRONMENT PROTECTION ISSUES**

**-TABLE OF IMPOSED FINE DECISIONS TO SHIPS – LAND FACILITIES AND OTHER SOURCES**

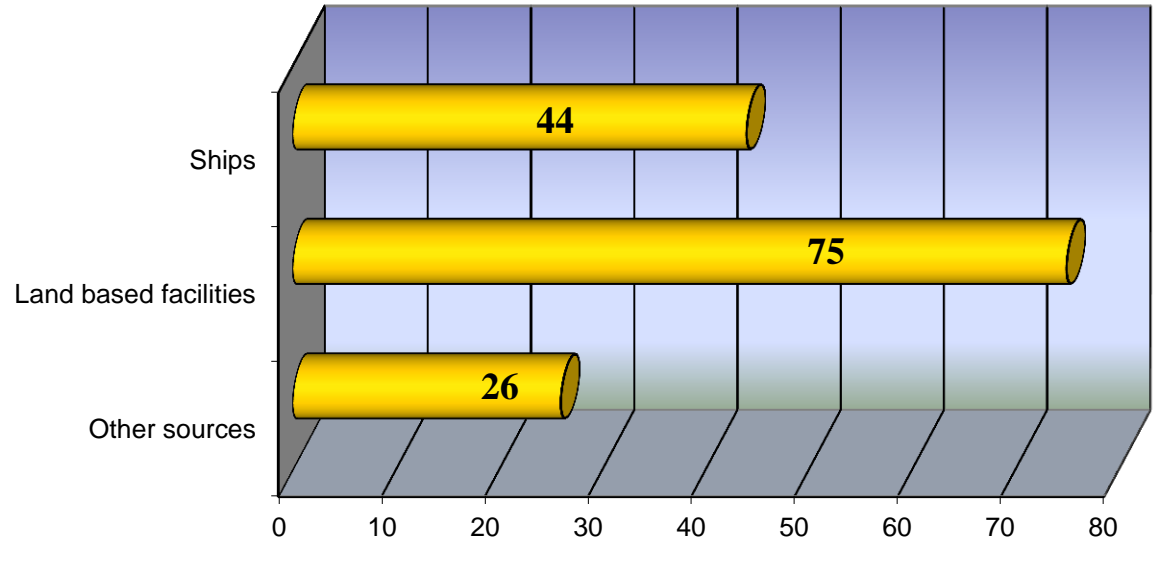
**-TABLE OF IMPOSED ADMINISTRATIVE SANCTIONS TO SHIPS – LAND FACILITIES AND OTHER SOURCES FOR VIOLATIONS OF MARINE ENVIRONMENT PROTECTION ISSUES FOR 1984-2011**

**PART A'**  
**TABLES AND CHARTS FROM THE ANALYSIS OF POLLUTION**  
**SOURCES FOR THE YEAR 2011**



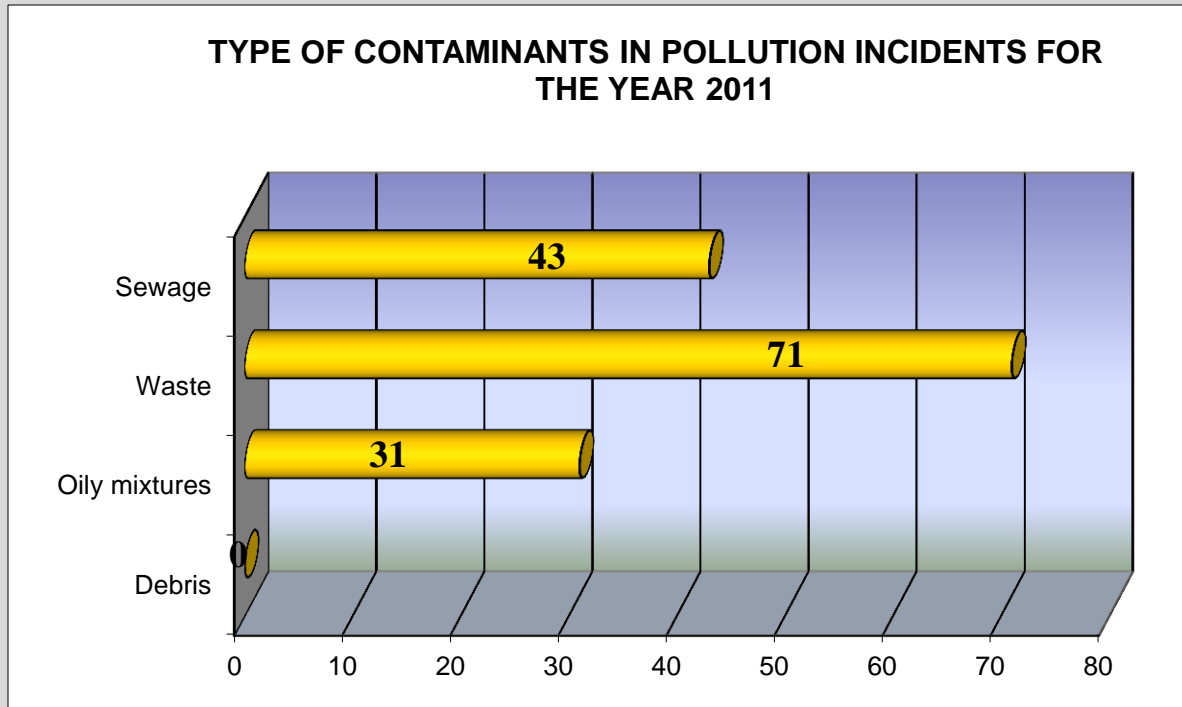
# ANALYSIS OF POLLUTION SOURCES

ANALYSIS OF POLLUTION SOURCES FOR THE YEAR 2011



# ANALYSIS OF THE TYPE OF CONTAMINANTS IN POLLUTION INCIDENTS

## INCIDENTS

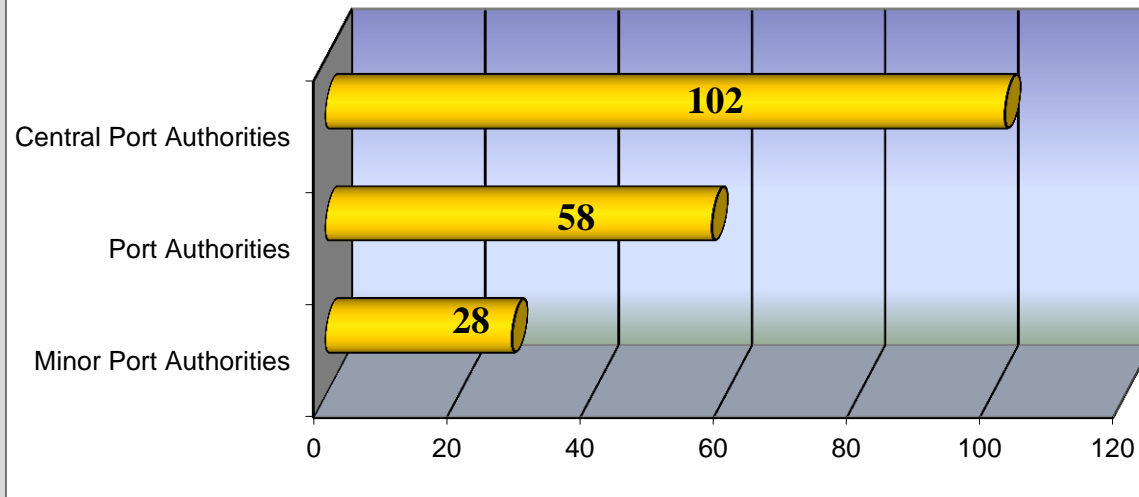


**PART B'**  
**TABLES AND CHARTS FROM THE ANALYSIS OF THE DECISIONS**  
**OF IMPOSED ADMINISTRATIVE SANCTIONS FOR THE YEAR 2011**



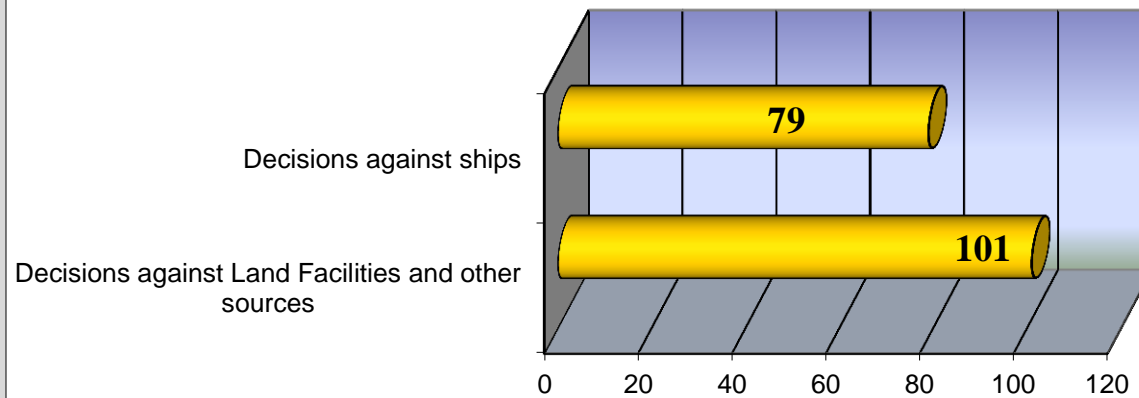
# NUMBER OF IMPOSED FINE DECISIONS PER PORT AUTHORITY TO SHIPS, LAND FACILITIES AND OTHER SOURCES

**NUMBER OF DECISIONS OF IMPOSED FINES FOR THE YEAR 2011 RELATED TO MARINE ENVIRONMENT PROTECTION ISSUES**



# ANALYSIS OF DECISIONS OF ADMINISTRATIVE SANCTIONS BASED ON THE POLLUTION SOURCE

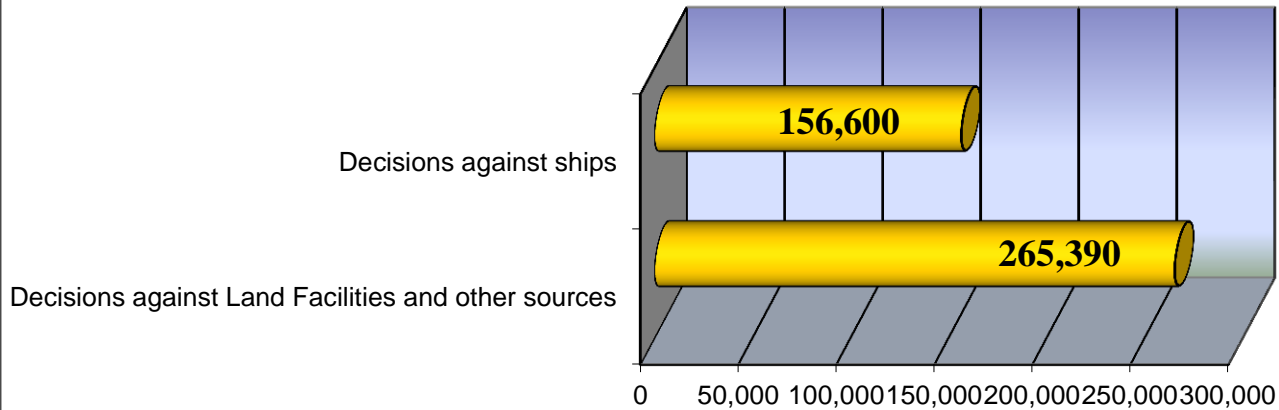
ANALYSIS OF DECISIONS OF ADMINISTRATIVE SANCTIONS  
FOR THE YEAR 2011



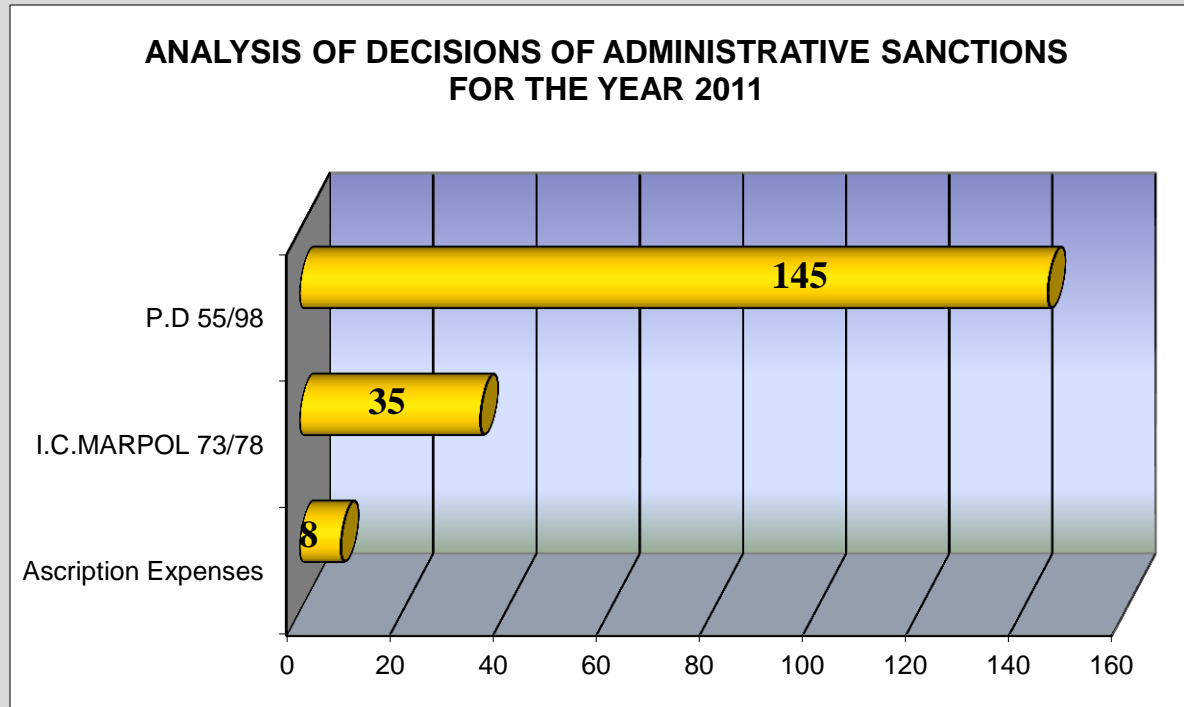


# ANALYSIS OF THE IMPOSED FINE DECISIONS OF ADMINISTRATIVE SANCTIONS BASED ON THE POLLUTION SOURCE

**ANALYSIS OF DECISIONS OF ADMINISTRATIVE SANCTIONS FOR THE YEAR 2011 BASED ON THE POLLUTION SOURCE**

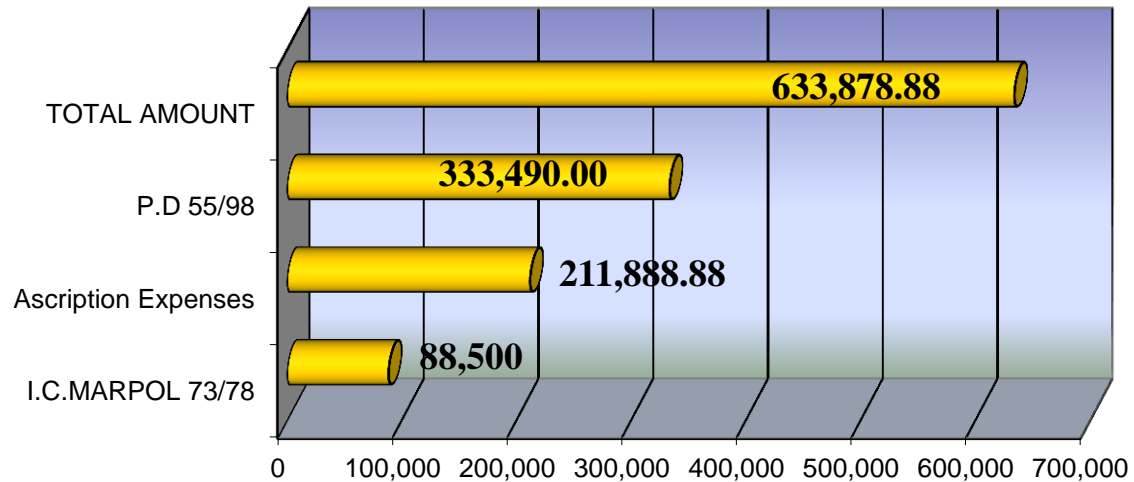


# ANALYSIS OF DECISIONS OF ADMINISTRATIVE SANCTIONS BASED ON THE APPLIED LEGISLATION

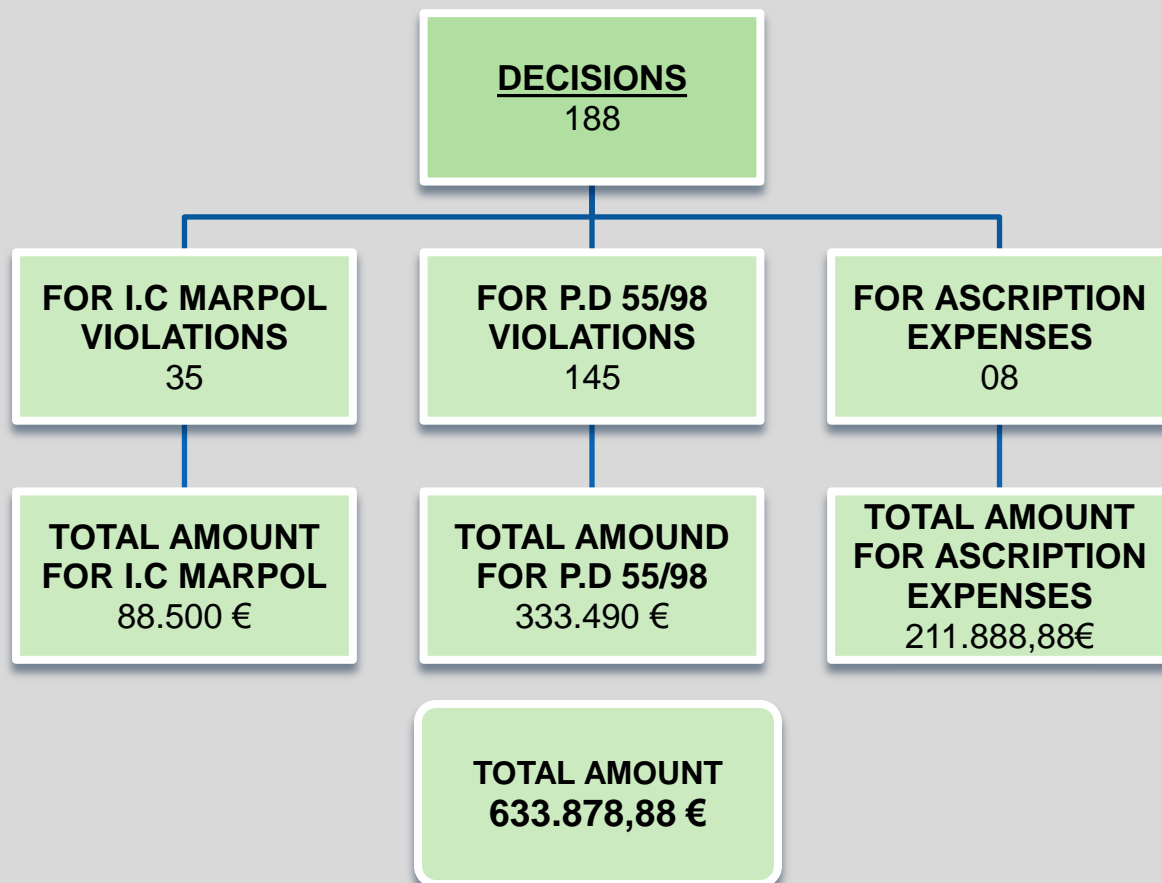


# TOTAL AMOUNT OF IMPOSED FINES FOR MARINE ENVIRONMENT PROTECTION ISSUES

ANALYSIS OF DECISIONS OF ADMINISTRATIVE SANCTIONS FOR THE YEAR 2011



**COLLECTIVE TABLE OF IMPOSED FINE DECISIONS TO SHIPS –  
LAND FACILITIES AND OTHER SOURCES  
FOR THE YEAR 2011**



**TABLE OF IMPOSED ADMINISTRATIVE SANCTIONS TO SHIPS – LAND FACILITIES  
AND OTHER SOURCES FOR VIOLATIONS OF MARINE ENVIRONMENT  
PROTECTION ISSUES FOR 1984 - 2011**

YEAR	SHIPS		LAND FACILITIES – OTHER SOURCES		ASCRPTION EXPENSES		TOTAL AMOUNTS	
	Number of Decisions	Amount in Drachmas / €	Number of Decisions	Amount in Drachmas /€	Number of Decisions	Total amount	Total of Decisions	Amounts in Drachmas/€
1984	193	15.342.000	177	28.115.000			370	43.457.000
1985	192	19.816.000	155	24.241.000			347	44.057.000
1986	158	28.588.000	215	26.228.000			373	54.816.000
1987	124	17.615.000	141	16.080.000			265	33.695.000
1988	99	14.667.000	184	20.110.000			283	34.770.000
1989	138	17.590.000	131	16.483.000			269	34.073.000
1990	218	505.627.000	158	48.425.000			376	554.052.000
1991	288	198.180.000	98	40.095.000			386	238.275.000
1992	273	519.134.427	199	45.600.000			472	564.734.427
1993	168	271.535.000	152	114.740.000			320	386.275.000
1994	221	455.645.000	112	25.690.000			333	481.335.000
1995	359	470.414.083	146	49.925.000			505	520.332.083
1996	278	690.109.284	140	71.910.000			418	762.019.284
1997	405	387.710.000	189	36.970.000			594	424.680.000
1998	200	203.573.216	141	77.260.000			341	280.833.216
1999	147	242.676.559	151	67.790.000			298	310.466.559
2000	182	602.165.015	198	133.650.000			380	735.815.015
2001	180	3.096.105 €	252	474.571 €			432	3.570.676 €
2002	190	989.737 €	183	391.515 €			373	1.381.252 €
2003	242	670.323 €	175	311.514 €			417	981.837 €
2004	71	206.722 €	74	161.610 €			145	368.332 €
2005	119	----	130	----			249	872.286 €
2006	184	----	161	----			345	832.195,14 €
2007	348	3.069.632,14 €	141	245.000 €			489	3.314.632,14 €
2008	516	4.080.194,00 €	109	154.100 €	16	821.856,38 €	641	5.056.150,38 €
2009	196	1.278.006,00 €	103	268.100,00 €	10	216.346,09 €	309	1.762.452,09€
2010	81	397.700 €	81	151.900 €	11	95.956,65 €	173	645.556,65 €
2011	79	265.390,00 €	101	156.600,00 €	08	211.888,88 €	188	633.878,88 €